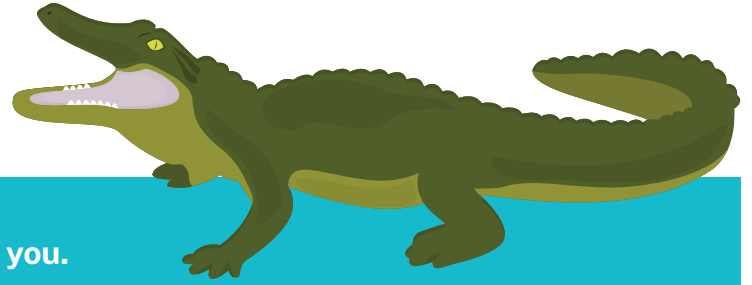




PASADENA  
HUMANE

# Word Scramble



Unscramble the words in each sentence.  
Use some of the pictures on the right to help you.

1. My \_\_\_\_\_ has \_\_\_\_\_ colored fur.  
OGD RNBWO

2. The \_\_\_\_\_ has a \_\_\_\_\_ body.  
EKNSA ENRGE

3. John's \_\_\_\_\_ has colorful \_\_\_\_\_.  
OPRATR TRAEFHSE

4. The cat has \_\_\_\_\_ and a long \_\_\_\_\_.  
SKSHWIRE IATL

5. My dog \_\_\_\_\_ when she wants to go on a \_\_\_\_\_.  
RSBAK KLWA

6. An \_\_\_\_\_ can give a painful \_\_\_\_\_.  
RIGALOLAT BETI

7. An animal with a long \_\_\_\_\_ is an \_\_\_\_\_.  
TKRNU EEPNTLAH

8. A \_\_\_\_\_ pig will \_\_\_\_\_ loudly if excited.  
EUNGAI WLTHSEI

9. A monkey can \_\_\_\_\_ from a \_\_\_\_\_.  
GIWSN HBARNC

10. In the jungle, a \_\_\_\_\_ is strong and is territorial.  
OGLAIRL



## ANSWERS

1. dog, brown
2. snake, green
3. parrot, feathers
4. whiskers, tail
5. barks, walk
6. alligator, bite
7. trunk, elephant
8. guinea, whistle
9. swing, branch
10. gorilla